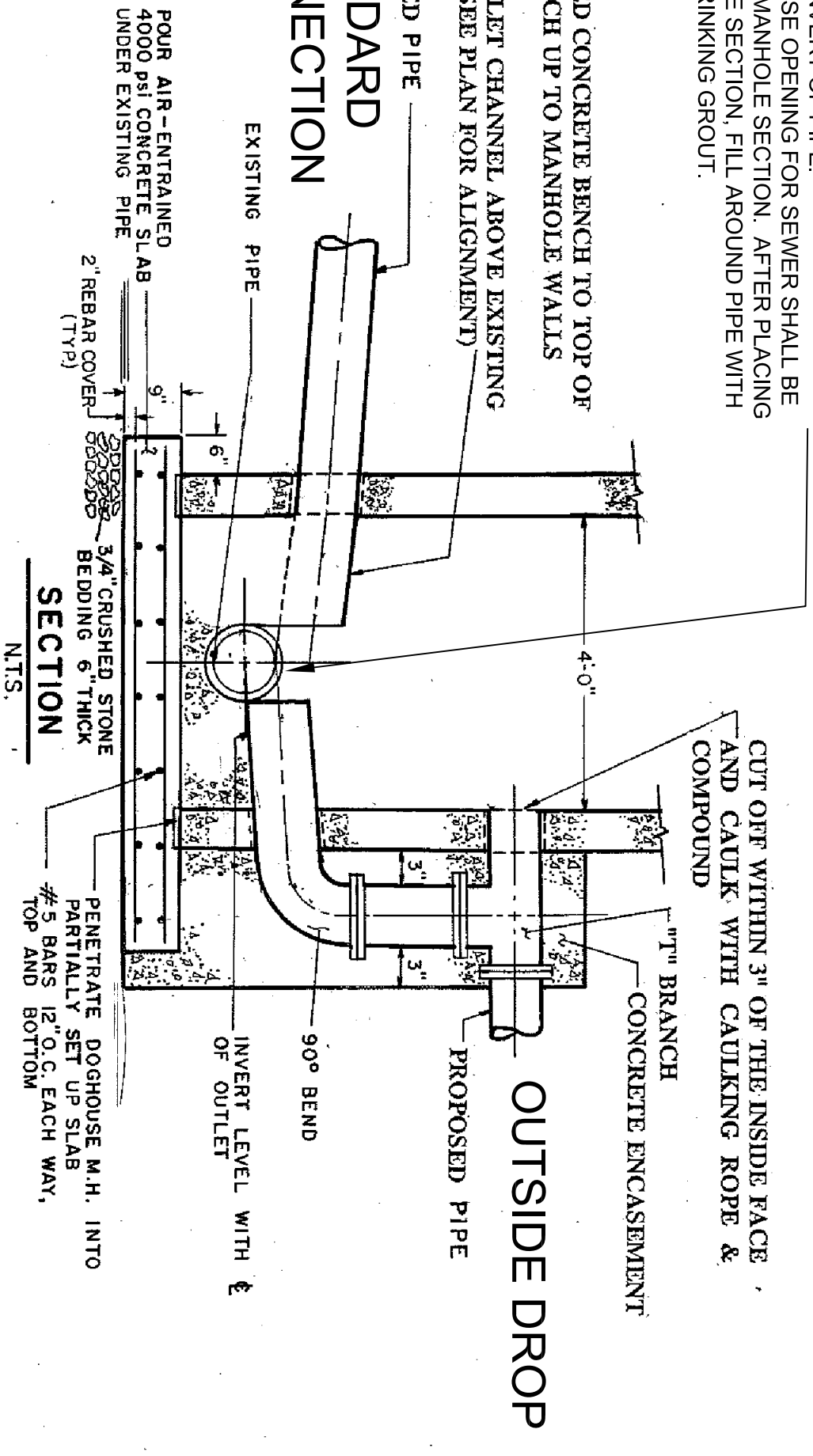


SPLIT PIPE TO FORM CHANNEL AFTER MANHOLE IS CONSTRUCTED. CHANNEL MUST MATCH INVERT OF PIPE. DOGHOUSE OPENING FOR SEWER SHALL BE CAST IN MANHOLE SECTION. AFTER PLACING MANHOLE SECTION, FILL AROUND PIPE WITH NON-SHRINKING GROUT.

PROPOSED CONCRETE BENCH TO TOP OF PIPE, PITCH UP TO MANHOLE WALLS

FORM INLET CHANNEL ABOVE EXISTING BENCH (SEE PLAN FOR ALIGNMENT)

PROPOSED PIPE
STANDARD
CONNECTION



CUT OFF WITHIN 3" OF THE INSIDE FACE AND CAULK WITH CAULKING ROPE & COMPOUND

DROP CONNECTION TO BE SAME DIAMETER AS INLET. SEWER FITTINGS SHALL BE PVC SCHEDULE 40 & SHALL CONFORM TO STANDARD SPECIFICATIONS FOR CONCRETE MASONRY UNITS FOR CONSTRUCTION OR CATCH BASINS & MANHOLES ASTM DESIGNATION C-139-39.

SECTION
N.T.S.

DOGHOUSE MANHOLE