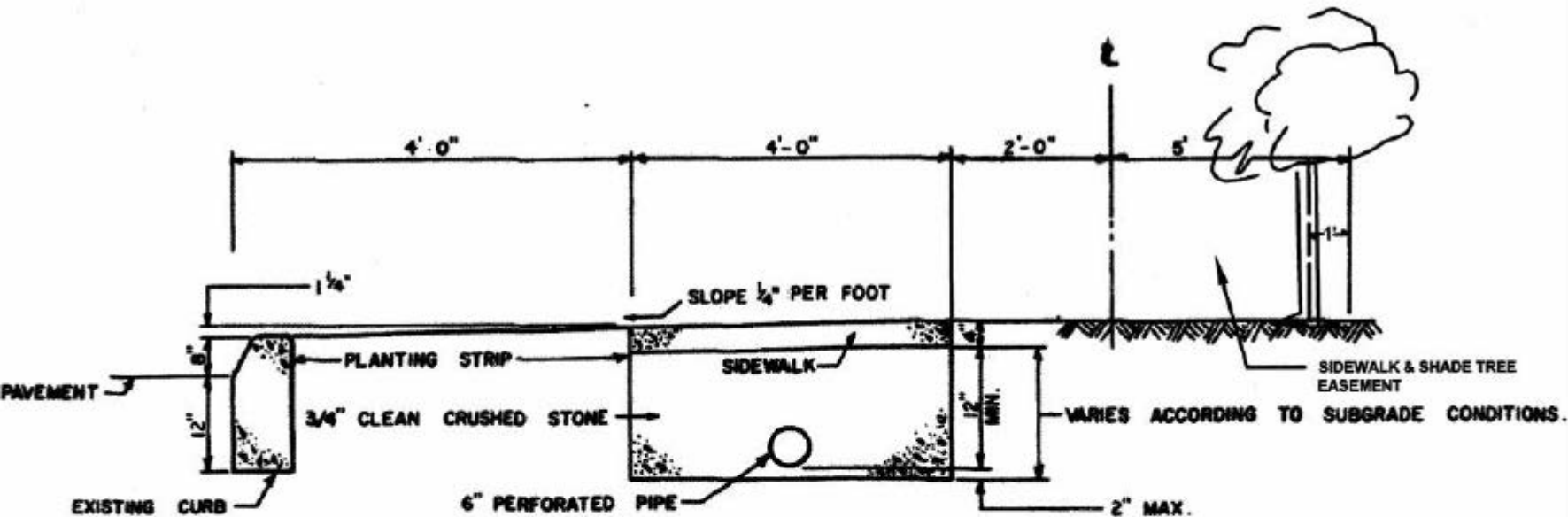


REMOVE EXISTING SIDEWALK. EXCAVATED TO SUITABLE MATERIAL.  
 COMPACT SUBGRADE. INSTALL 6" PERFORATED PIPE. PLACE 3/4" CLEAN CRUSHED STONE.  
 COMPACT WITH A VIBRATORY COMPACTOR. CONSTRUCT SIDEWALK OF CLASS "B" AIR ENTRAINED  
 CONCRETE HAVING A 28-DAY VERIFICATION STRENGTH OF 4,500 P.S.I.  
 IN DRIVEWAY AREAS CONSTRUCT CURB AND "6" APRON MONOLITHICALLY AS SHOWN.  
 APPLY TRANSLUCENT CURING COMPOUND TO EXPOSED SURFACES N.J.D.O.T. STD. SPEC. 8.5.29.

## **SIDEWALK AND DRAIN DETAIL**

N.T. 5,



**NOTE :**

REMOVE EXISTING SIDEWALK. EXCAVATE TO SUITABLE MATERIAL.

COMPACT SUBGRADE. INSTALL 6" PERFORATED PIPE. PLACE 3/4" CLEAN CRUSHED STONE.

COMPACT WITH A VIBRATORY COMPACTOR. CONSTRUCT SIDEWALK OF CLASS "B" AIR ENTRAINED CONCRETE, HAVING A 28-DAY VERIFICATION STRENGTH OF 4,500 P.S.I.

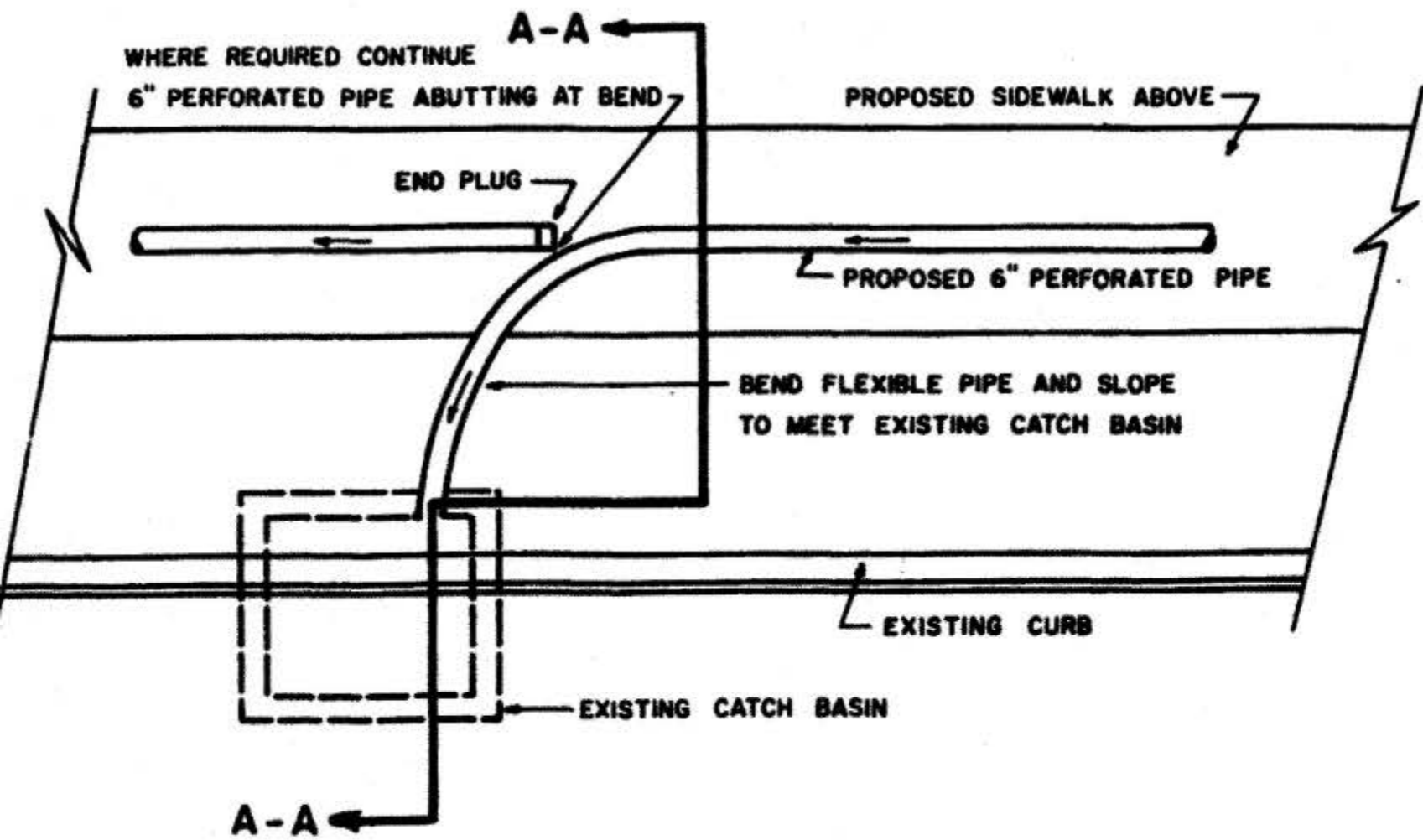
IN DRIVEWAY AREAS CONSTRUCT CURB AND 6" APRON MONOLITHICALLY AS SHOWN.

APPLY TRANSLUCENT CURING COMPOUND TO EXPOSED SURFACES N.J.D.O.T. STD. SPEC. 8.5.29.

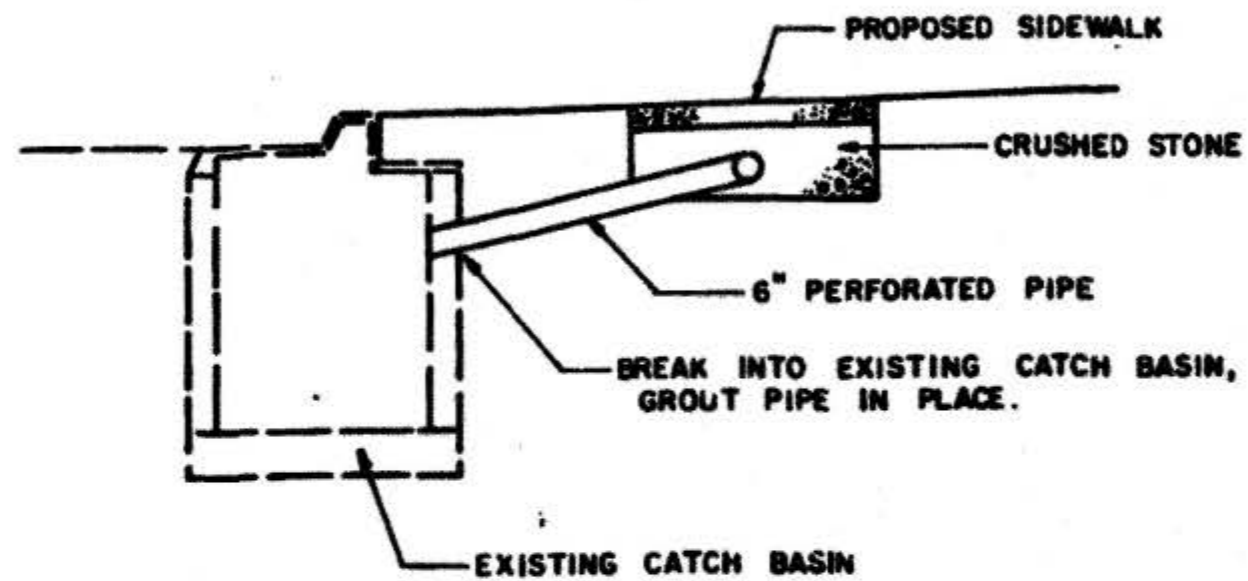
504.03.02.F.1

## SIDEWALK & DRAIN DETAIL

N.T.S.



PLAN



SECTION A-A

SIDEWALK DRAIN PIPING DETAILS

SCALE : 1/4" = 1' - 0"