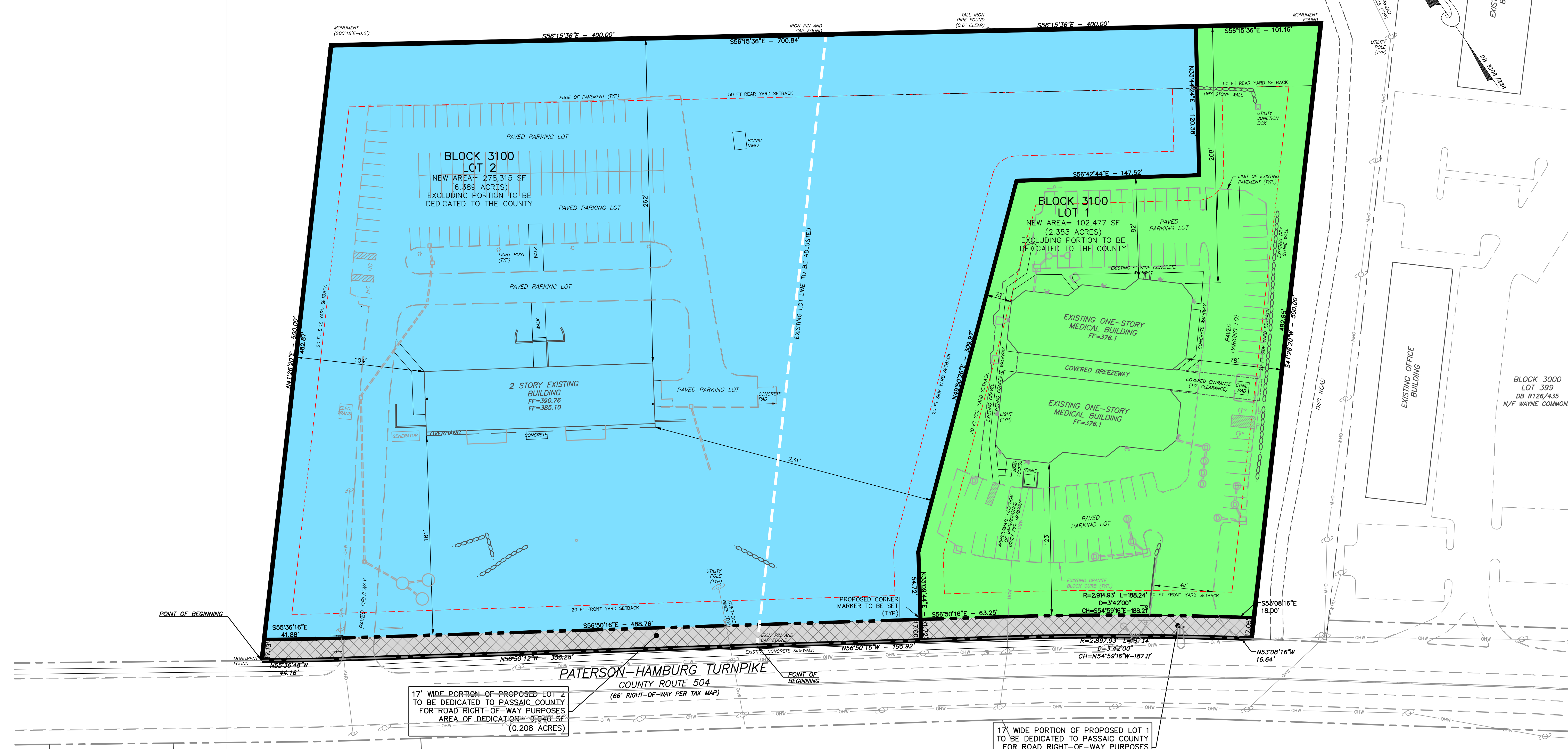


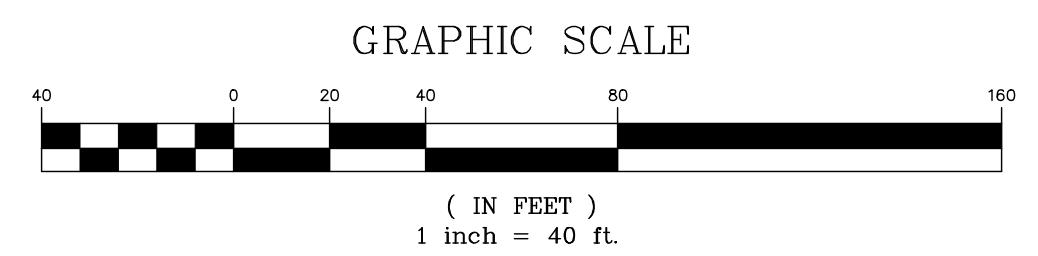
J:\edek\PROJ\18\18034\exhibit.dwg 01/24/22 01:08:48PM mike Layout:MINOR

BLOCK 3100
LOT 3
N/F NORTH JERSEY
COUNTRY CLUB



17' WIDE PORTION OF PROPOSED LOT 2
TO BE DEDICATED TO PASSAIC COUNTY
FOR ROAD RIGHT-OF-WAY PURPOSES
AREA OF DEDICATION= 9,040 SF
(0.208 ACRES)

17' WIDE PORTION OF PROPOSED LOT 1
TO BE DEDICATED TO PASSAIC COUNTY
FOR ROAD RIGHT-OF-WAY PURPOSES
AREA OF DEDICATION= 4,560 SF
(0.105 ACRES)



KENNETH D. DYKSTRA
PROFESSIONAL ENGINEER AND LAND SURVEYOR N.J. LIC. No. 24GB03297200

DATE REVISION

DYKSTRA WALKER
DESIGN DW GROUP PA
PROFESSIONAL ENGINEERS, PLANNERS & SURVEYORS
21 BOWLING GREEN PARKWAY, SUITE 204 - LAKE HOPATCONG, NJ 07849
PHONE (973) 663-4540 - FAX (973) 663-0042
WWW.DYKSTRAWALKER.COM

MICHAEL D. FISHER, P.E.
PROFESSIONAL ENGINEER N.J. LIC. No. 24GE05112100

MINOR SUBDIVISION PLAN
MINOR SUBDIVISION
NORTH JERSEY MEDICAL VILLAGE
BLOCK 3100, LOTS 1 & 2
PATERSON-HAMBURG TURNPIKE (CR 504)
TOWNSHIP OF WAYNE
PASSAIC COUNTY NEW JERSEY

DW
SCALE: 1" = 40'
JOB NO.: 18034
DRAWN BY: MDF
CHECKED BY: KDD
DATE: 7/31/21
SHEET NO. 3 OF 4